

Hannah Joseph Hospital



Your Faith shall Heal

HANNAH JOSEPH HOSPITAL LIMITED

INVESTOR PRESENTATION

Transforming Healthcare Through
**Clinical Excellence, Advanced
Technology & Compassionate Care**



Building a Future of Accessible, High-Quality
Healthcare



**Healing Lives.
Building Trust.**



HANNAH JOSEPH HOSPITAL LIMITED

Hannah Joseph Hospital

A Multi-Specialty Tertiary Care Hospital

Focus: Neurosciences and Trauma Care

30+ World Class Amenities

133 bed multi-specialist hospital

Revenue: INR 92.05 Crs (FY 26)

70+ Doctors



Company Overview



HANNAH JOSEPH HOSPITAL LIMITED

Hannah Joseph Hospital is a trusted multi-specialty healthcare institution focused on delivering advanced, patient-centric medical care. With modern technology and a highly experienced team, the hospital is known for accurate diagnosis, effective treatment, and compassionate care, continuously evolving to meet the community's healthcare needs.

01

Advanced Neurosurgery & Neurology

02

Trauma & Emergency Care

03

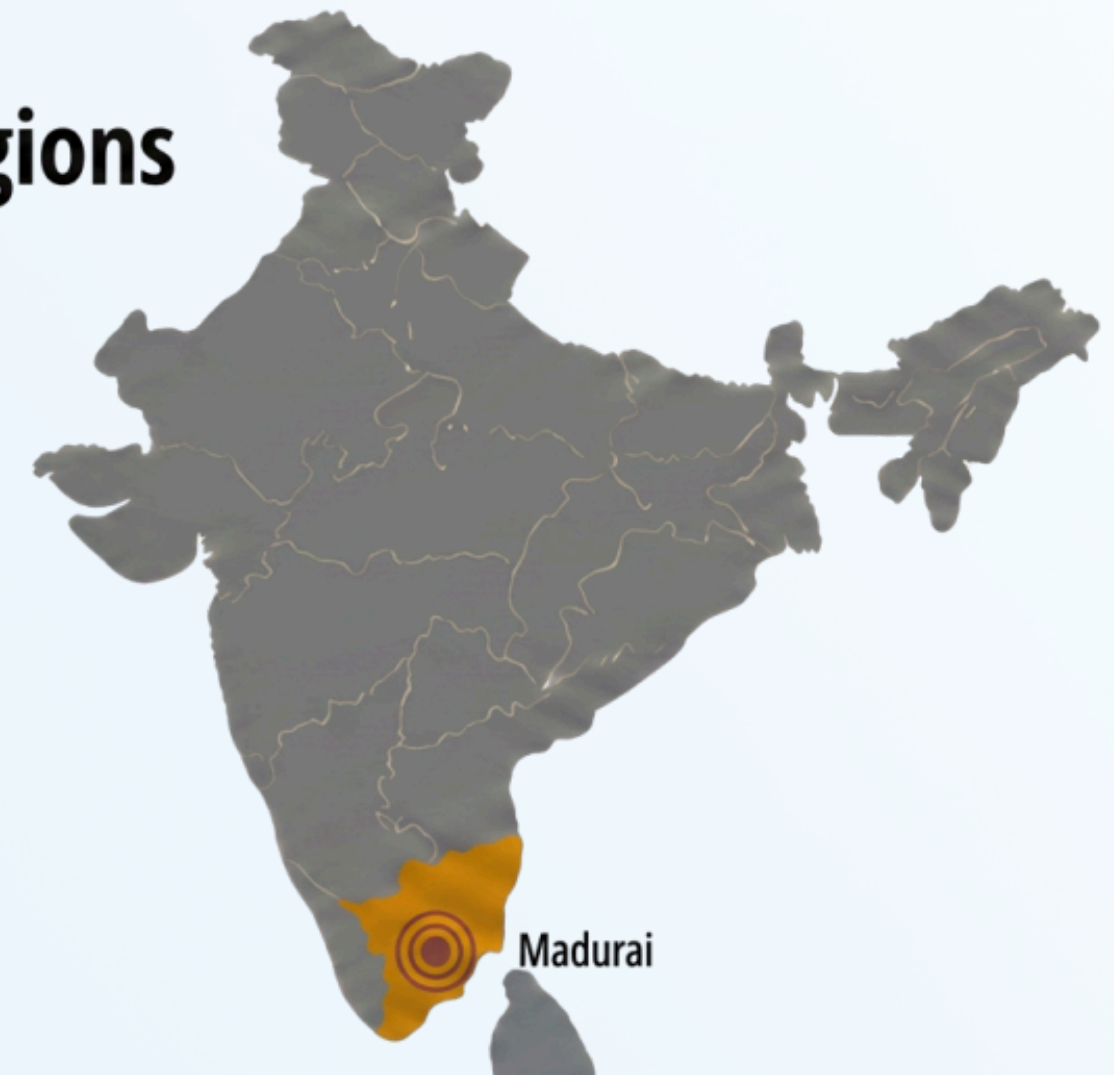
Interventional Neuroradiology

04

State of the Art Diagnostics

Our Reach Across Regions

- Domestic
 - Madurai (Primary Market)
 - Tamil Nadu Regions
 - Ramanathapuram, Sivagangai, Virudhunagar, Theni, Tenkasi, Dindigul, Trichy, Tirunelveli, Pudukkottai, Tuticorin
- NRI's
 - Sri Lanka
 - Malaysia
 - Singapore
 - Middle East



Founded: 2008 | Location: Madurai, Tamil Nadu | Type: SME Listed

Leadership Behind Hannah Joseph Hospital



HANNAH JOSEPH HOSPITAL LIMITED

Our vision is to be an international center of excellence in Neurosciences, Accident and Trauma care

Dr. Moses Joseph Arunkumar- Visionary Behind Hannah Joseph

Promoter, Chairman & Managing Director

25+ years in Neurosurgery

Ex-Apollo & CMC Vellore

Former President- Tamil Nadu Association of Neurological Surgeons

Education Background: M.B.B.S., M.Ch. (Neurosurgery), D.N.B.

Recipient: Dr. A.P.J. Abdul Kalam Inspiration Award (2023)



Dr. Fenn Kavitha Fenn Arunkumar

Promoter & Whole-Time Director

22+ years in Psychiatry & Healthcare

Ex-Apollo Speciality Hospital

Educational Background: M.B.B.S., DPM, D.N.B. (Psychiatry)

Leads policy execution & strategy implementation



Our mission is to improve the health of the community through our commitment to innovation and quality of patient care. This we shall achieve by employing staff committed to clinical excellence and compassionate patient care utilizing cutting edge technology and adopting the finest healthcare standards.

THE OPPORTUNITY

Radiation Oncology Centre Expansion Opportunity



HANNAH JOSEPH HOSPITAL LIMITED



Brain & Spine Tumor Leadership

- Build on Hannah Joseph Hospital's recognized Neurosciences expertise
- Comprehensive treatment for complex brain and spine tumors
- Strengthen referral network across neighboring states



Integrated Cancer Care

- Surgery, Radiation Therapy & Chemotherapy under one roof
- Multidisciplinary treatment approach
- Improved clinical outcomes and patient convenience



Revenue Expansion

- Additional IPD and OPD revenue streams
- High-margin oncology and radiation services
- Enhanced patient retention and cross-specialty utilization



Dedicated Oncology Campus

- Adjacent land already acquired
- Purpose-built cancer care infrastructure
- Future-ready capacity for long-term growth

TECHNOLOGY EDGE

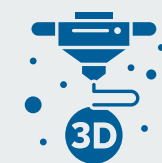
BrainLab Navigation & AI-Powered Surgical Precision



HANNAH JOSEPH HOSPITAL LIMITED



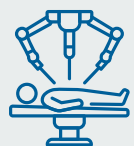
BrainLab Navigation System



Real-time 3D image-guided surgical navigation



Precise localization of brain and spinal tumors



Enhanced accuracy in complex neurosurgical procedures



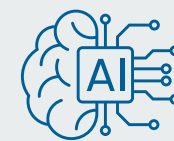
Reduced surgical risk through advanced planning tools



Improved patient outcomes and clinical confidence



DTI Fiber Tracking 3.0 (AI)



AI-powered visualization of critical neural pathways



Supports preservation of functional brain regions



Enables safer tumor resections and surgical planning



Integrates advanced imaging with intra-operative guidance



Enhances precision in high-risk neurosurgical cases

Oncology Services Portfolio



HANNAH JOSEPH HOSPITAL LIMITED

01

Early Detection & Screening

- Preventive cancer screening programs
- Community awareness initiatives
- Early-stage diagnosis

02

Advanced Diagnostics

- MRI & CT Imaging
- Neuro-radiology
- Pathology & Molecular Diagnostics

03

Palliative & Supportive Care

- Pain management
- Nutritional counseling
- Psychological support

04

Chemotherapy Services

- Day-care chemotherapy
- Targeted therapy
- Immunotherapy support

05

Decision Point

- Precision radiation therapy
- Brain and spine tumor treatment
- Advanced treatment planning

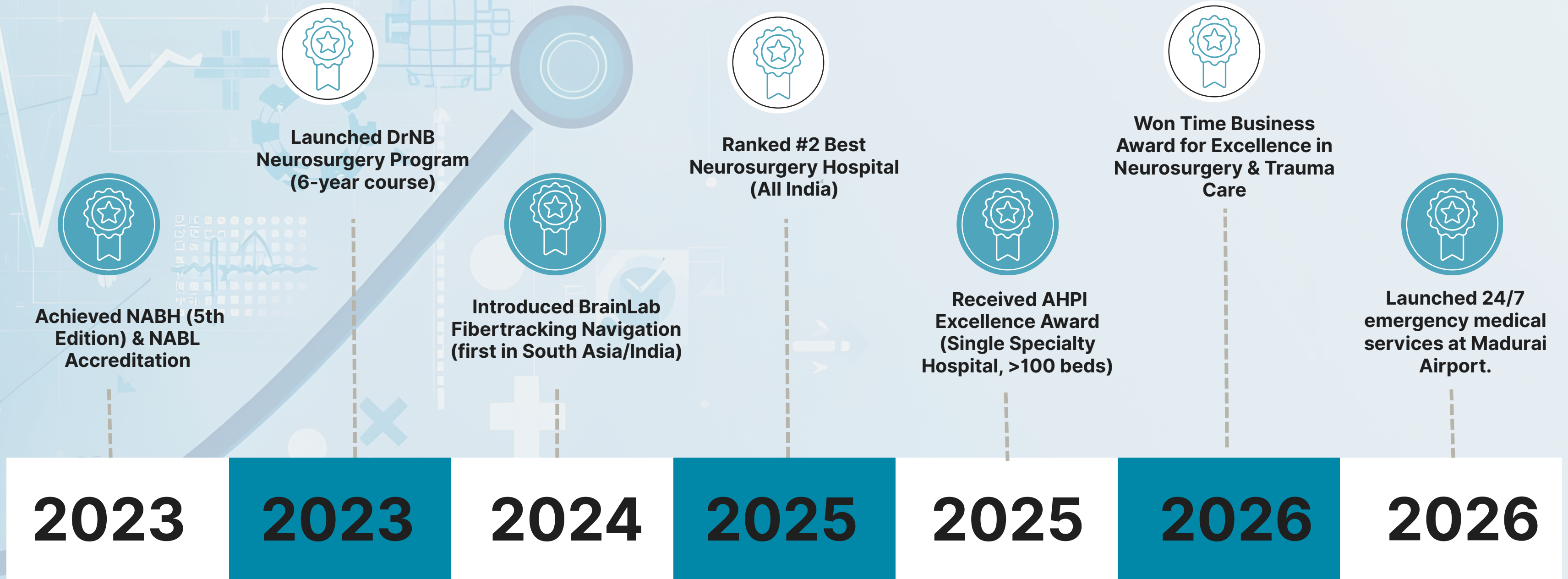
06

Surgical Oncology

- Neuro-oncology procedures
- Image-guided surgeries
- Minimally invasive interventions

Strategic Milestones

Demonstrating sustained growth through quality accreditations, advanced technology adoption, and industry recognition





HANNAH JOSEPH HOSPITAL LIMITED

FINANCIAL PERFORMANCE

Financial Overview



HANNAH JOSEPH HOSPITAL LIMITED

Revenue (FY26)

₹ 92.05 Cr



Revenue Mix (FY26)



HOSPITAL

₹ 65.72 Cr

71.4%



PHARMACY

₹ 25.79 Cr

28%



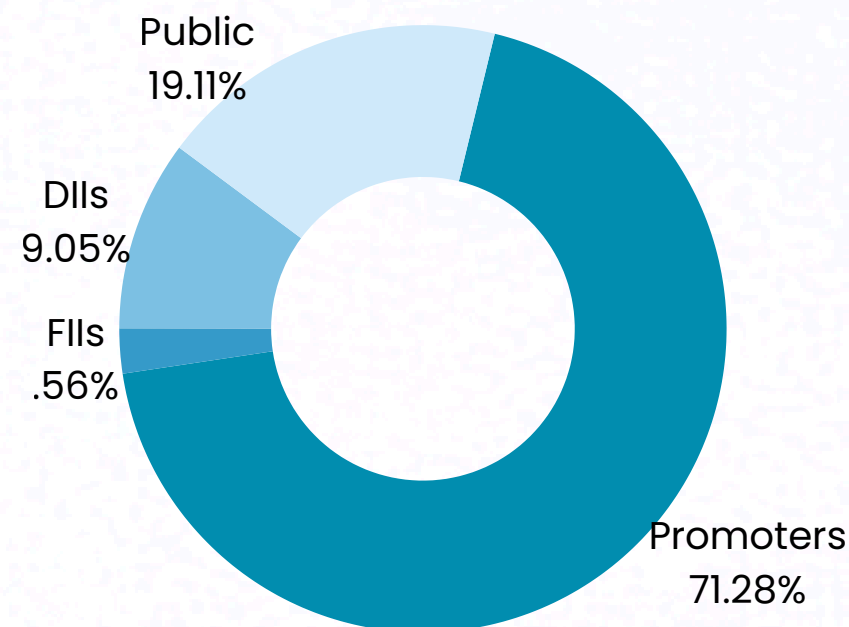
DIETARY

₹ 0.54 Cr

0.6%



Shareholding Pattern



Insurance tie-ups
34 Companies



Current capacity
133 beds

Financial & Operational Highlights



HANNAH JOSEPH HOSPITAL LIMITED

All figures in ₹ Crs.

Particulars	31st March 2026	31st March 2025	31st March 2024	31st March 2023
Revenue from operation	92.05	77.53	63.41	54.62
Revenue Growth Rate	18.73%	22.27%	16.09%	
EBITDA	24.96	20.52	17.98	16.38
EBITDA margin	27.12%	26.47%	28.35%	29.99%
PAT	11.18	7.21	4.07	1.01
PAT margin	12.15%	9.30%	6.42%	1.85%
Net worth	97.37	51.94	45.71	34.55
Return on Equity Ratio (Avg Eq)	15.00%	14.77%	10.13%	3.14%
Basic / Diluted EPS (Rs.)	6.32	4.32	2.47	0.63
Total no.of shares (In crore)	2.27	1.67	1.67	1.63
Price to book value (Rs.)	42.89	31.10	27.38	21.13

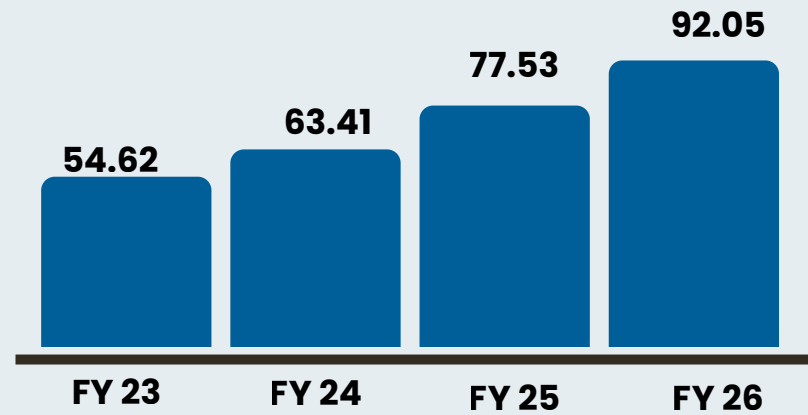
Improvement in our Business performance over the past few years



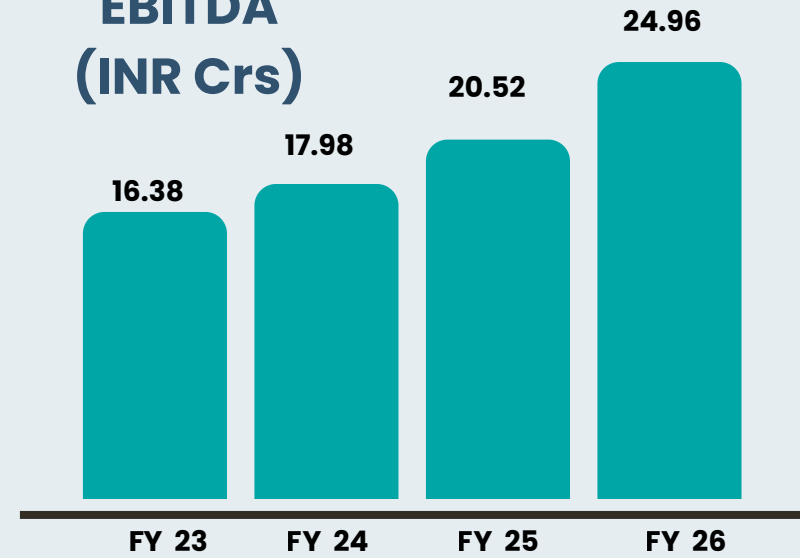
Your Faith shall Heal

HANNAH JOSEPH HOSPITAL LIMITED

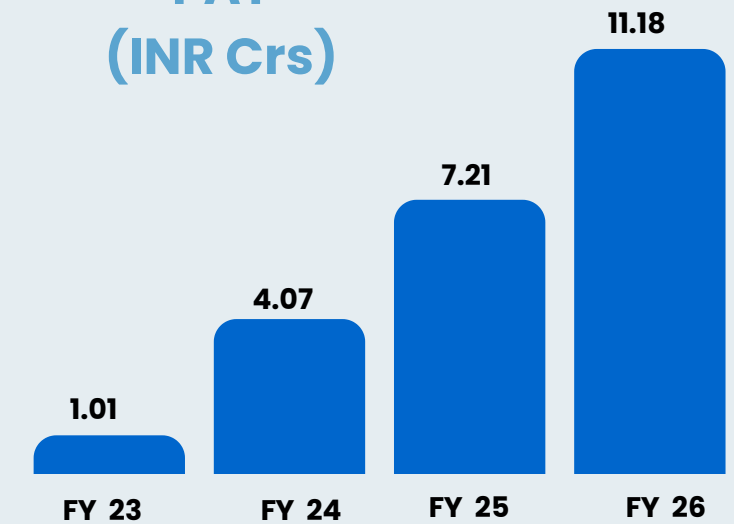
Revenues (INR Crs)



EBITDA (INR Crs)



PAT (INR Crs)



REVENUE CAGR

19%

EBITDA CAGR

15.07%

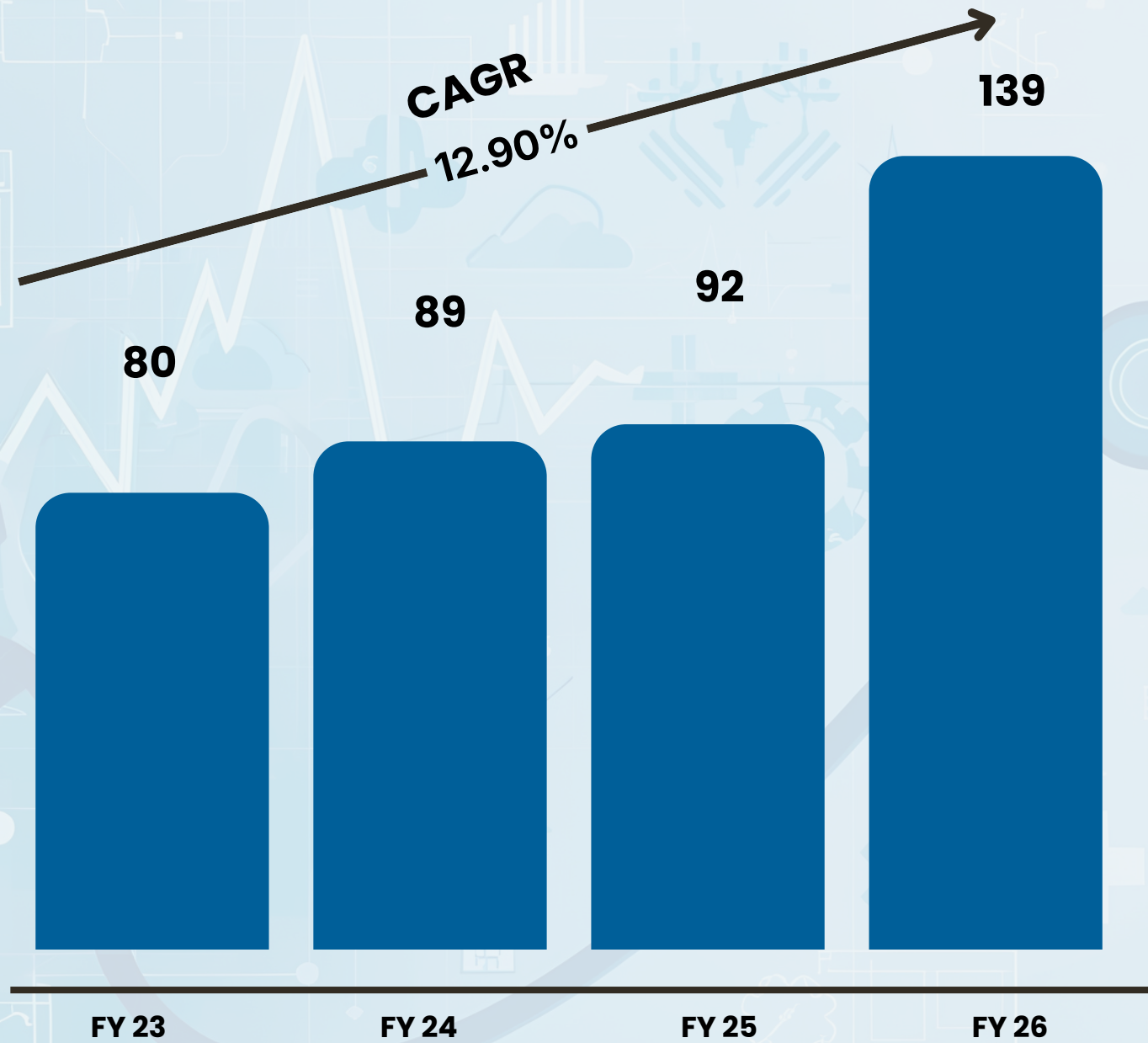
Financial & Operational Highlights

KPI	FY23	FY24	FY25	FY26
Revenue from hospital (₹ Lakhs)	3,686	4,353	5,223	6,572
Average Bed Occupancy	46	49	57	57
Capacity Utilization (%)	34.63%	37.11%	42.49%	43.00%
Average Length of Stay	12	13	15	14
ARPOB (₹ Lakhs) per year	80	89	92	139
Revenue/Bed/Day (in Rupees)	22,000	24,000	25,000	38,000

Financial & Operational Highlights

ARPOB Trend (Average Revenue per Occupied Bed)

(₹ in Lakhs)



ARPOB improved from ₹80 lakh in FY23 to ₹139 lakh in FY26, driven by higher occupancy, enhanced service mix, and improved revenue realization.



Average Bed Occupancy

57 Beds

FY23: 46 Beds → FY26: 57 Beds

↑
24.10%
Growth



Revenue per Bed / Per Day

₹38,000

FY23: ₹0.22 Lakh → FY26: ₹0.38 Lakh

↑
72.72%
Growth



Capacity Utilization

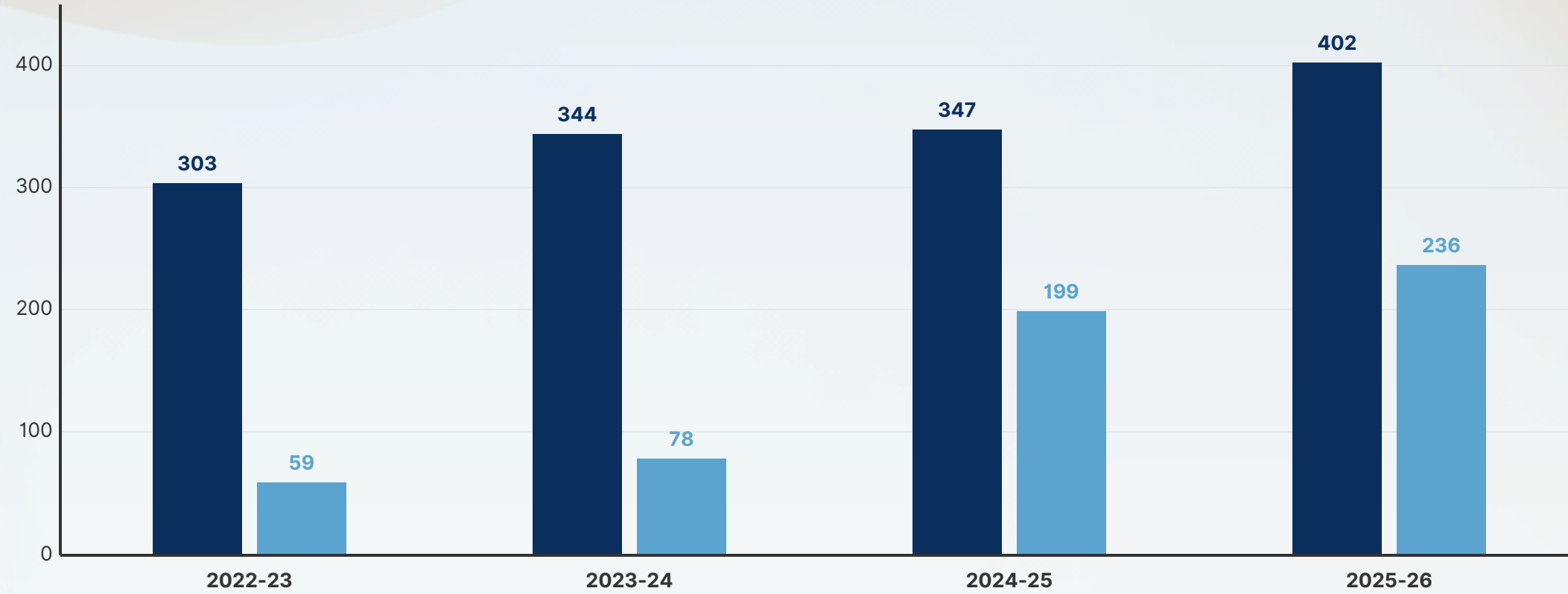
43%

FY23: 34.63% → FY26: 43.00%

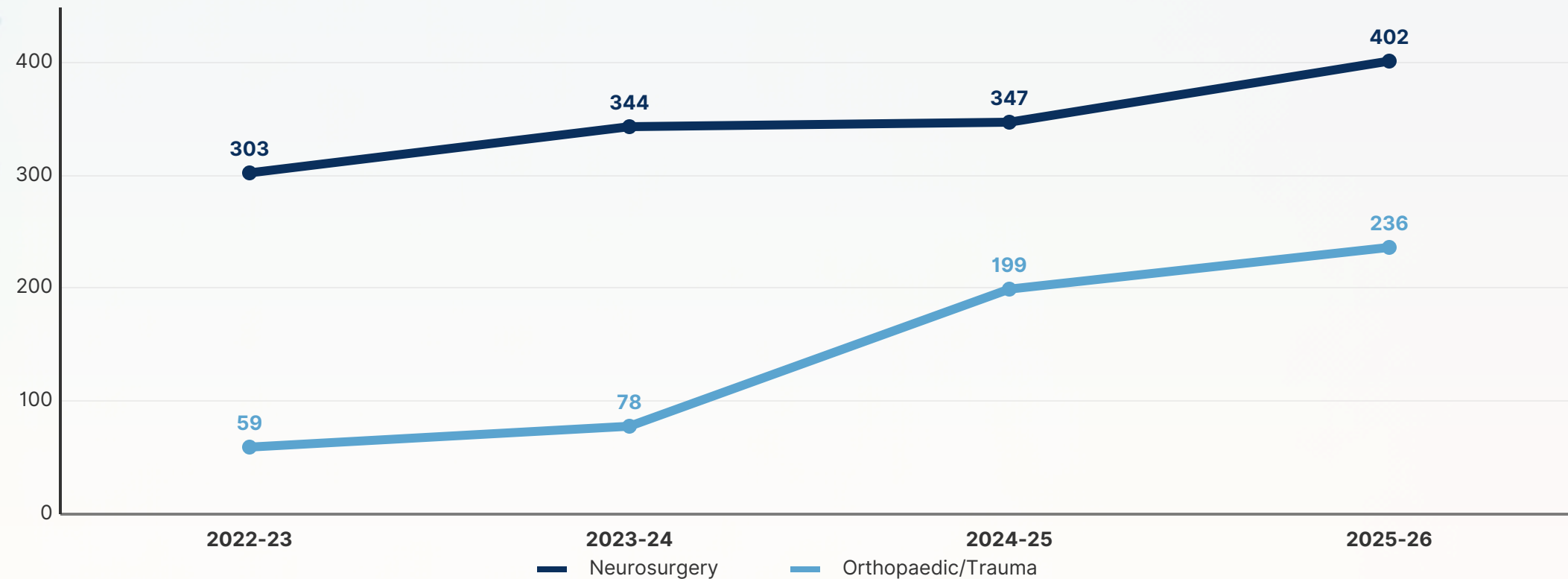
↑
24.30%
Growth

Financial & Operational Highlights

SURGICAL GROWTH - BAR CHART



SURGICAL GROWTH



Neurosurgery



402
Cases

↑
16.12%

Orthopaedics & Trauma



Growth
236
Cases

↑
19.20%

Overall Surgical Growth



638
Cases

↑
16.80%

ACHIEVEMENTS



HANNAH JOSEPH HOSPITAL LIMITED



TIMES BUSINESS AWARD '26 (MADURAI & TRICHY)

"EXCELLENCE IN NEUROSURGERY & TRAUMA CARE"



FORTUNE INDIA - TRUSTED BRANDS '25

"DR. M.J. ARUNKUMAR FEATURED"



INDIA TODAY EMINENT DOCTORS SOUTH '26

*"TOP 10 NEUROSURGERY / BEST DOCTORS SOUTH
RANKED 1ST"*



OUTLOOK MAGAZINE '25

*"EMINENT DOCTOR — TOP 10 NEUROSURGERY / BEST
DOCTORS SOUTH"*



AHPI-TN EXCELLENCE AWARD '25 FOR NEUROSCIENCES

*"SINGLE SPECIALTY HOSPITAL OF THE YEAR
(ABOVE 100 BEDS)"*



OUTLOOK & NEB RESEARCH '25

*"RANKED #2 BEST NEUROSURGERY HOSPITAL- ALL
INDIA"*



CII HEALTH CARE EXCELLENCE AWARD '25 FOR NEUROSCIENCES

*"NEUROLOGY : 100-BEDDED HOSPITAL CATEGORY, TN
MEDCLAVE 2025"*



TIMES AWARDS '25

*"EXCELLENCE IN NEUROSURGERY & INTERVENTIONAL
NEURORADIOLOGY"*

THANK YOU

KYRO RELATIONS

Investor Relations and Public Relations Partner

+91 7777839077  irpr@kyrocapital.in  Indore & Mumbai

Disclaimer

Kyro Relations operates as a separate division within Kyro Capital Private Limited. While both fall under the same legal entity, Kyro Capital Private Limited and Kyro Relations function independently and maintain a strict Chinese Wall in accordance with applicable laws, regulations, and guidelines relating to Unpublished Price Sensitive Information (UPS). Kyro Relations is headed by Mrs. Rachna Chelawat, and all clients and engagements under this division are solely managed and supervised by the Division Head. Kyro Capital Private Limited does not participate in, influence, or have operational involvement in the activities, decisions, or client management undertaken by the Kyro Relations division, thereby ensuring full compliance and segregation of responsibilities.